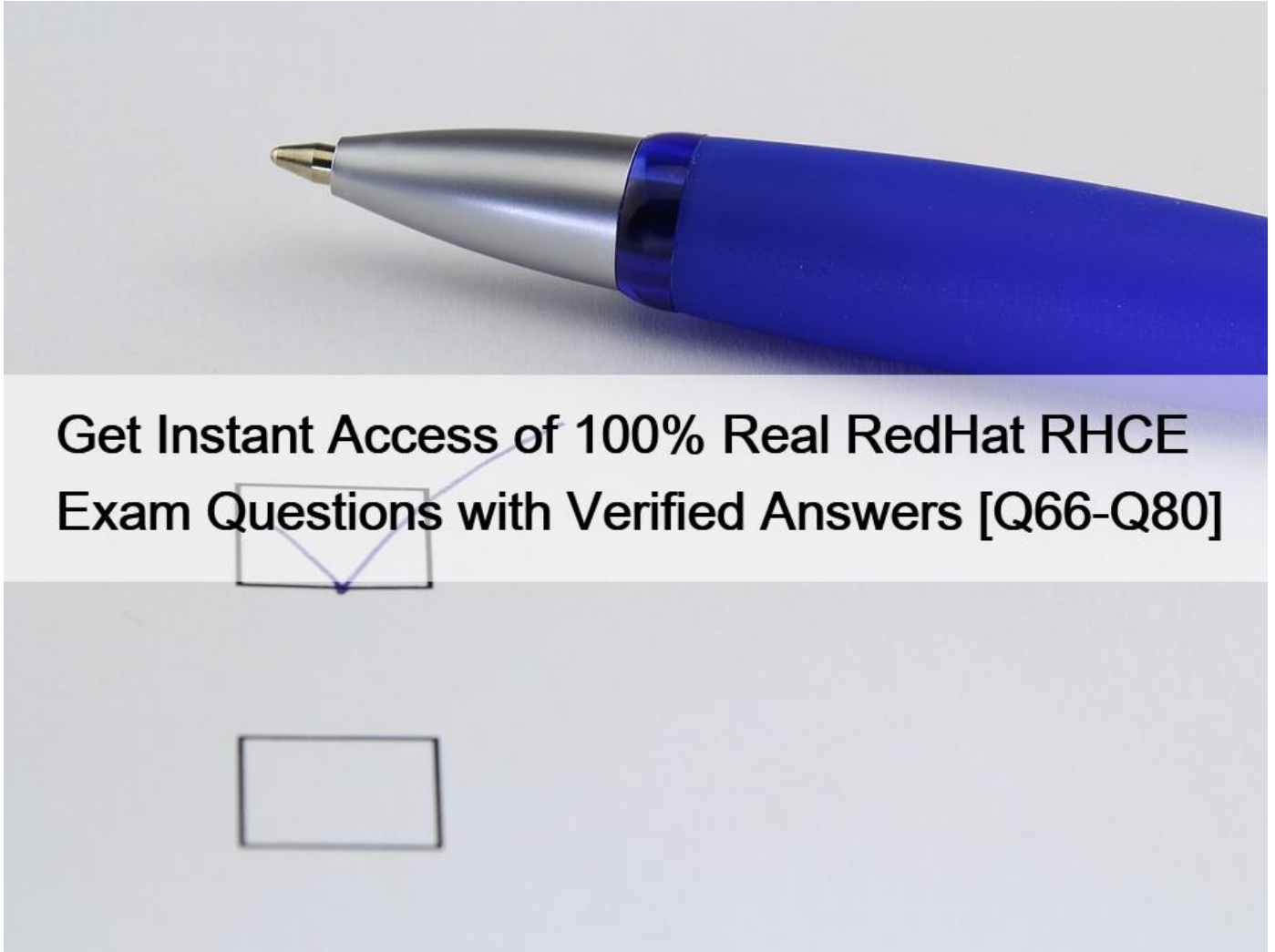


## Get Instant Access of 100% Real RedHat RHCE Exam Questions with Verified Answers [Q66-Q80]



Get Instant Access of 100% Real RedHat RHCE Exam Questions with Verified Answers [Q66-Q80]

### Get Instant Access of 100% Real RedHat RHCE Exam Questions with Verified Answers Exam Dumps for the Preparation of Latest RHCE Exam Questions QUESTION 66

CORRECT TEXT

Create a new logical volume according to the following requirements:

The logical volume is named database and belongs to the datastore volume group and has a size of 50 extents.

Logical volumes in the datastore volume group should have an extent size of 16 MB.

Format the new logical volume with a ext3 filesystem.

The logical volume should be automatically mounted under /mnt/database at system boot time.

fdisk-cu/dev/vdpartx-a/dev/vdapvcreate/dev/vdaxvgcreatedatastore/dev/vdax-s16Mlvcreate-150-ndatabasedatastoremkfs.ext3/dev/d  
atastore/databasemkdir/mnt/databasemount/dev/datastore/database/mnt/database/df-Thvi/etc/fstab/dev/datastore/database/mnt/databa  
se/ext3defaults00mount-a

### QUESTION 67

CORRECT TEXT

Configure NTP.

Configure NTP service, Synchronize the server time, NTP server: classroom.example.com

Configure the client: Yum-yinstallchrony Vim/etc/chrony.conf Add:serverclassroom.example.com iburst Start:systemctl enable chronyd sy  
stemctl restart chronyd Validate:timedatectl status

### QUESTION 68

CORRECT TEXT

Download ftp://192.168.0.254/pub/boot.iso to /root, and mounted automatically under /media/cdrom and which take effect  
automatically at boot-start.

```
#cd/root;wgetftp://192.168.0.254/pub/boot.iso
```

```
#mkdir-p/media/cdrom
```

```
#vim/etc/fstab/root/boot.iso/media/cdrom iso9660 defaults loop00
```

```
#mount-amount[-tvfstype][--options]device dir
```

### QUESTION 69

CORRECT TEXT

Add user: user1, set uid=601

Password: redhat

The user's login shell should be non-interactive.

```
#useradd-u601-s/sbin/nologin user1
```

```
#passwd user1 redhat
```

### QUESTION 70

CORRECT TEXT

Binding to an external validation server.

System server.domain11.example.com provides a LDAP validation service, your system should bind to this service as required:

Base DN of validation service is dc=example,dc=com

LDAP is used for providing account information and validation information. Connecting and using the certification of `http://server.domain11.example.com/pub/EXAMPLE-CA-CERT` to encrypt

After the correct configuration, `ldapuser1` can log into your system, it does not have HOME directory until you finish autofs questions, `ldapuser1` password is `password`.

```
yum-yinstallsssdauthconfig-gtkkrb5-workstationauthconfig-gtk//openthegraphicalinterfaceModifyuseraccountdatabasetoldapfillupD  
NandLDAPSERVERasquestionsrequireduseTLStoencryptconnectionsmakingtickwritehttp://server.domain11.example.com/pub/EX  
AMPLE-CA-CERTtodownloadcaauthenticationmethodchooseldappassword.Youcantestiftheldapuserisaddedbythefollowingcomman  
d:Idldapuser1Note:userpassworddoesn'tneedtoset
```

### QUESTION 71

CORRECT TEXT

Make on data that only the user owner and group owner member can fully access.

```
chmod770/data
```

Verify using: `ls -ld /data` Preview should be like: `drwxrwx&#8212;2root:sysadmin4096Mar1618:08/data` To change the permission on directory use the `chmod` command. According to the question that only the owner user (`root`) and group member (`sysadmin`) can fully access the directory so: `chmod770/data`

### QUESTION 72

CORRECT TEXT

SELinux must run in force mode.

```
/etc/sysconfig/selinuxSELINUX=enforcing
```

### QUESTION 73

CORRECT TEXT

Configure a HTTP server, which can be accessed through `http://station.domain40.example.com`.

Please download the released page from `http://ip/dir/example.html`.

```
#yuminstall-yhttpd
```

```
#chkconfighttpdon
```

```
#cd/var/www/html
```

```
#wgethttp://ip/dir/example.html
```

```
#cpexample.comindex.html
```

```
#vim/etc/httpd/conf/httpd.confNameVirtualHost192.168.0.254:80<VirtualHost192.168.0.254:80>DocumentRoot/var/www/html/ServerNamestation.domain40.example.com</VirtualHost>
```

### QUESTION 74

#### CORRECT TEXT

Configure a user account.

Create a user iar , uid is 3400. Password is redhat  
useradd-u3400iarpasswdiar

#### QUESTION 75

#### CORRECT TEXT

Configure your web services, download from <http://instructor.example.com/pub/serverX.html> And the services must be still running after system rebooting.

```
cd/var/www/htmlwgethttp://instructor.example.com/pub/serverX.htmlmvserverX.htmlindex.html/etc/init.d/httpdrestartchkconfighttp  
don
```

#### QUESTION 76

#### CORRECT TEXT

User mary must configure a task.

Requirement: The local time at 14:23 every day echo &#8220;Hello World.&#8221;.  
crontab-umary-e2314\*\*\*echo&#8221;HelloWorld.&#8221;

#### QUESTION 77

#### CORRECT TEXT

Successfully resolve to server1.example.com where your DNS server is 172.24.254.254.

```
vi/etc/resolv.confnameserver172.24.254.254
```

hostserver1.example.comOneveryclientsDNSserverisspecifiedin/etc/resolv.conf.WhenyourequestbynameittriestoresolvfromDNSserv  
er.

#### QUESTION 78

#### CORRECT TEXT

Configure a cron Task.

User natasha must configure a cron job, local time 14:23 runs and executes: \*/bin/echo hiya every day.

```
crontab-e-unatasha2314/bin/echohiyacrontab-l-unatasha//viewssystemctlenablecronssystemcdlrestartcron
```

#### QUESTION 79

#### CORRECT TEXT

Configure a task: plan to run echo hello command at 14:23 every day.

#whichecho

#crontab-e2314\*\*\*/bin/echohellos

#crontab-l(Verify)

## QUESTION 80

### CORRECT TEXT

Create a 2G swap partition which take effect automatically at boot-start, and it should not affect the original swap partition.

#fdisk/dev/sdap(checkPartitiontable)n(createnewpartition:pressetocreateextendedpartitionpressptocreatethemainpartitionandtheexten  
dedpartitionisfurtherdividedintologicalpartitions)Enter+2GtWpartx-a/dev/sdapartprobemkswap/dev/sda8CopyUUIDswapon-avim/et  
c/fstabUUID=XXXXXswapswapdefaults00(swapon-s)

**Download Latest & Valid Questions For RedHat RHCE exam:** <https://www.topexamcollection.com/RHCE-vce-collection.html>